

<h2 style="text-align: center;">SCHEDULE OF PUBLIC PROHIBITED/PRIVATE AREAS</h2>
--

COURSE INFORMATION

- 1 All Dimensions/Locations of Designated Specified Areas are approximate and the minimum requirement. They may be subject to change at the discretion Event Course Safety Personnel and the promoting club.

- 2 It is also assumed that in all areas the course extent parameters are as per the DRD Road Services Definitions of Ownership ie to the centre of the defining hedge or fence, ie the road verge is a prohibited area

 “Encroachment into these areas will result in racing being suspended until they are cleared”.

- 3 A system of **A2/A3** size public information boards will be utilised and placed at specific access and prohibited area locations around the course. Please take a moment to familiarise yourself with the designated areas.

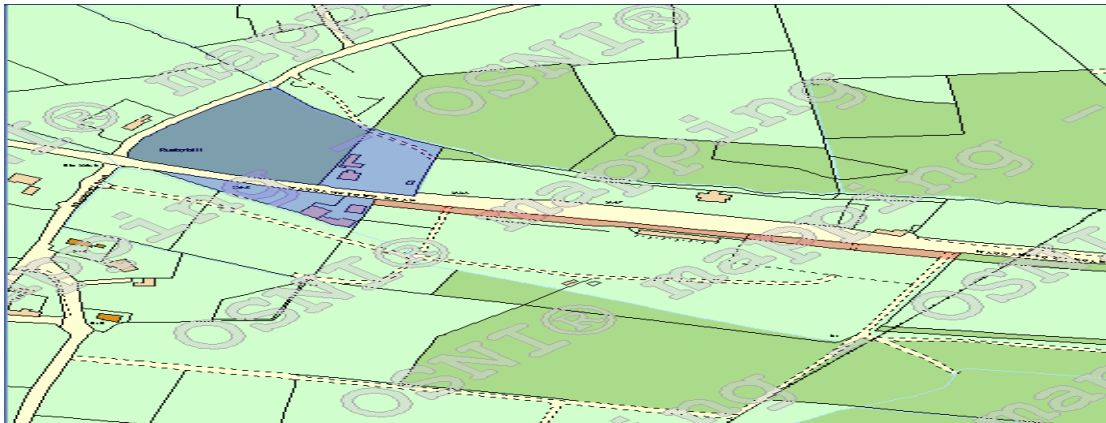
- 4 Public Prohibited / Private area notices will be located within these areas and **must** be obeyed at all times.

 “Encroachment into these areas will result in racing being suspended until they are cleared”.

“PLEASE OBEY THE MARSHALS AND OFFICIALS AT ALL TIMES”

Start/Finish/Pits	Rev 2	Date <i>April 2013</i>	Sheet No. 1
-------------------	-------	------------------------	-------------

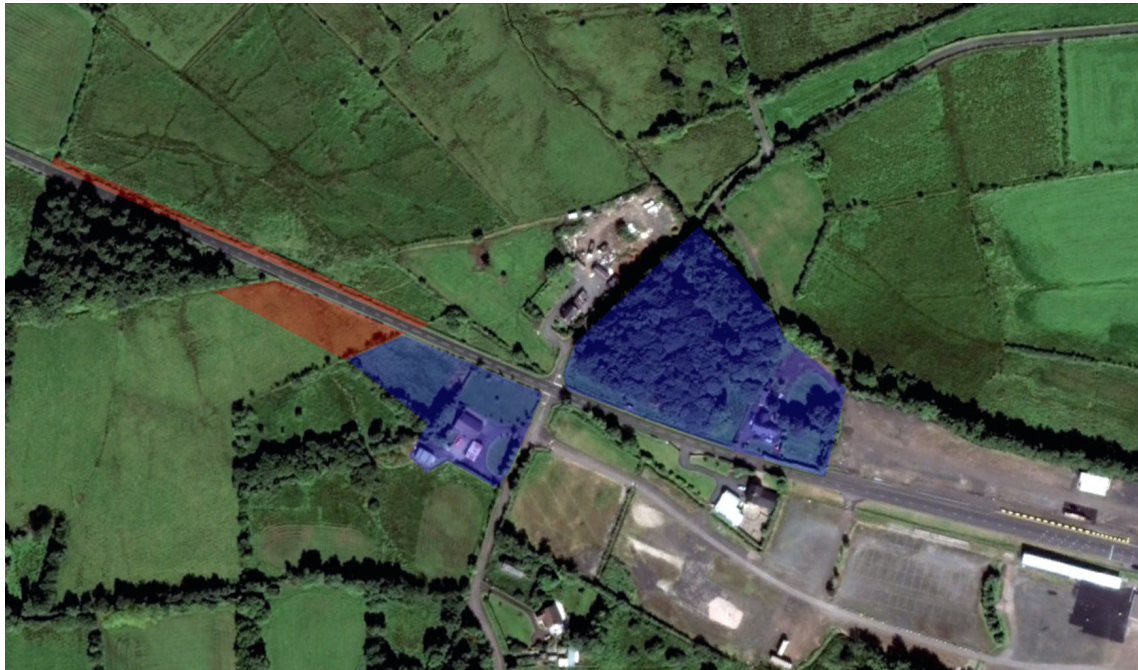
- (1) LHS Grass verge cordoned off in front of commercial area – **Public Prohibited Area**
- (2) LHS grass area in front of grandstand – **Public Prohibited Area.**
- (3) LHS grass area in front of Camper Park and Parking – - **Public Prohibited Area.**
- (4) RHS before crossroads House No 12 Hannahstown road at bottom of pits and woodland - **Private Area.**
- (5) LHS before crossroads House No1 Hannahstown Road and garden - **Private Area.**



(1) LHS after crossroads Hse No 5A Hannaghstown Rd including Garden and field - Private Area

(2) LHS 1st field after No 5A prohibited area of approx 25M in line with existing hedge to wooded area parallel to course – - Public Prohibited Area.

(3) RHS 1st field wide grass verge to fence – - Public Prohibited Area.

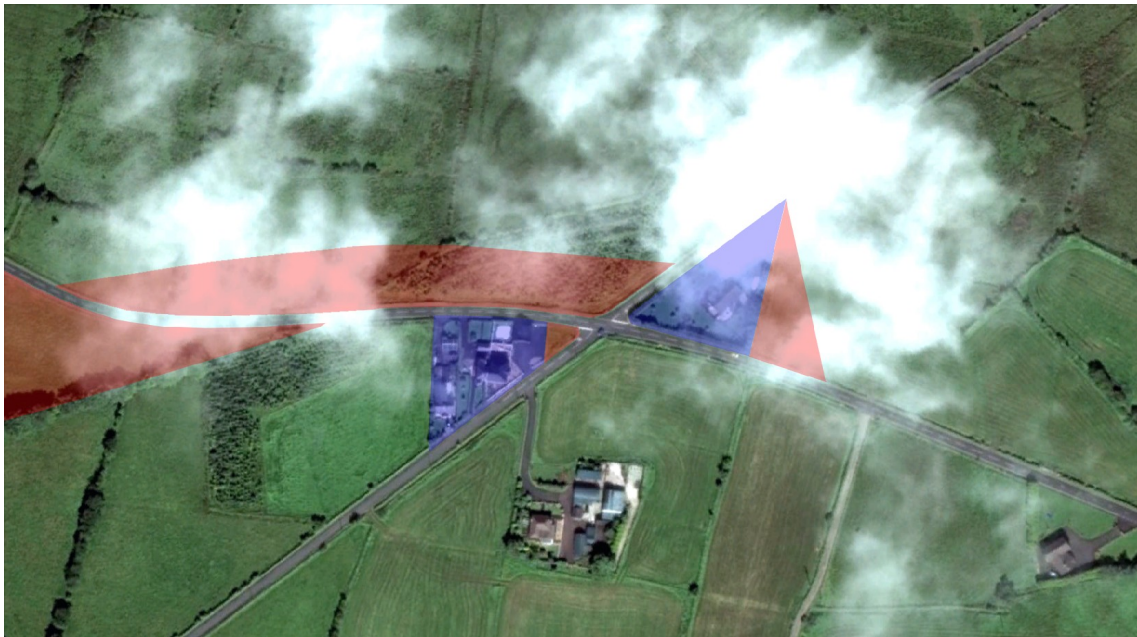


(1) LHS Grass verge immediately After junction - - **Public Prohibited Area.**

(2) RHS Planted Area outside of corner immediately after junction **Public Prohibited Area.**

(3) RHS Last field before Bungalow at crossroads from last gate diagonally across field to corner - - **Public Prohibited Area.**

(4) RHS/LHS House and Grounds - **Private Area**



(1) LHS 1st field outside of corner, removable fencing - **Public Prohibited Area.**

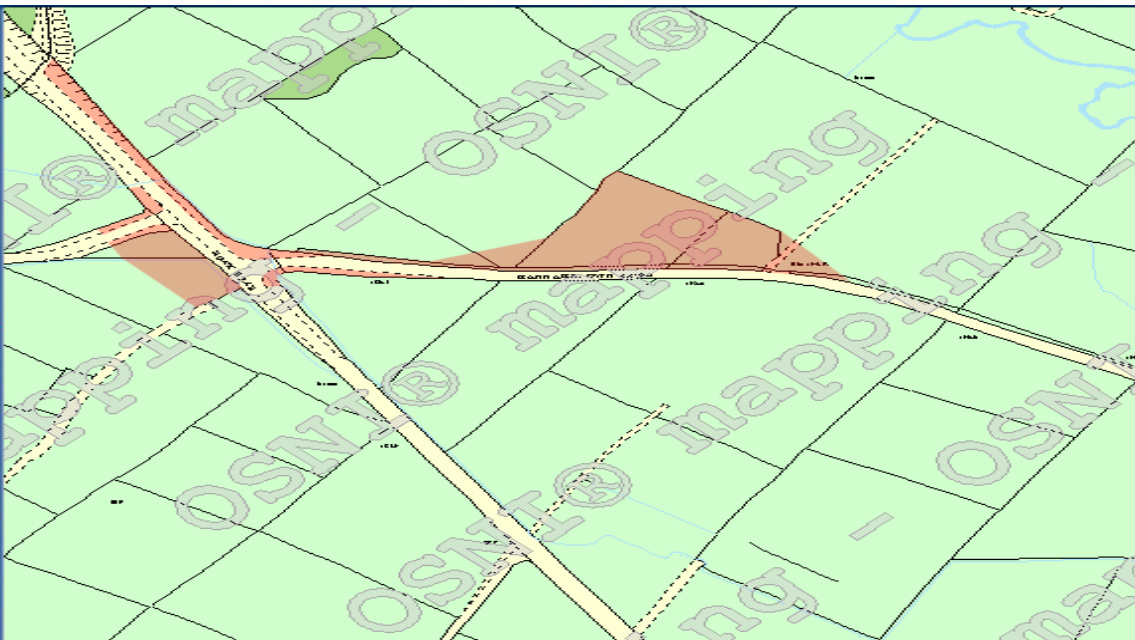
(2) LHS 2nd field outside of corner, removable fencing - **Public Prohibited Area.**

(3) LHS 3rd field outside of corner, line from approx 20M on course
Prohibited Area.

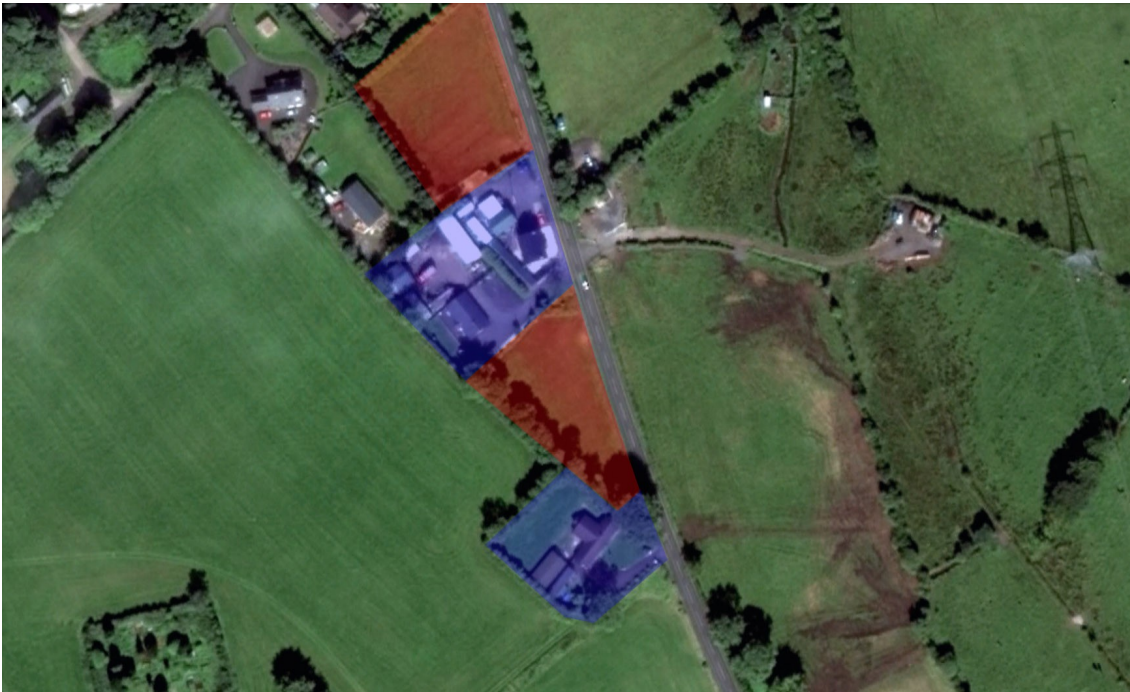
(Gate) to corner of field - **Public**



- (1) RHS field at removable fencing – Public Prohibited Area.
- (2) Immediately after and including laneway 20M from track and 30M diagonally to course - Public Prohibited Area.
- (3) LHS/Run off field at removable fencing to a depth of 50M – Public Prohibited Area.
- (4) Wide grass verges on all roads at junction – Public Prohibited Area.
- (5) Right hand grass verges after junction – Public Prohibited Area.

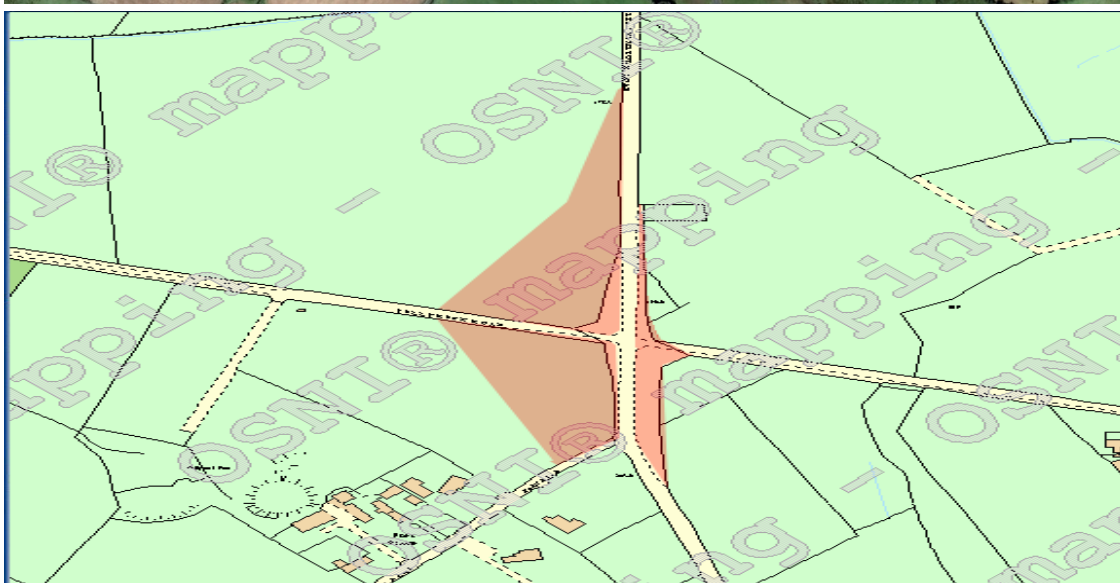


- (1) LHS Right Hander at end of straight garden and parking - [Private Area](#)
- (2) LHS at removable fencing - [Public Prohibited Area.](#)
- (3) LHS House No 15 front garden - [Private Area](#)
- (4) LHS Grass verge and field after House No 15 – [Public Prohibited Area.](#)

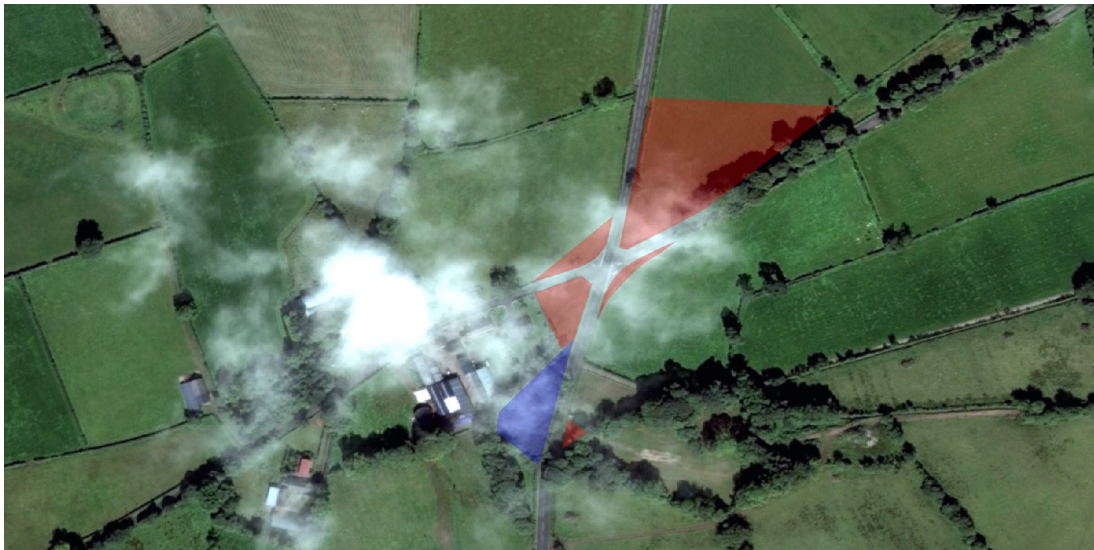


Deer's Leap	Rev 2	Date April 2013	Sheet No. 7
-------------	-------	-----------------	-------------

- (1) LHS Field after Fort Rd 25M from course diagonally to 80M at Tullyrusk Road (Opposite Gate) - Public Prohibited Area.
- (2) LHS Field after Tullyrusk Rd 80M from course diagonally towards Gate, at 10M from gate angled to course at beginning of hedge (Opposite Gate) - Public Prohibited Area.
- (3) LHS Large grass verge at junction with Tullyrusk road - Public Prohibited Area.
- (4) RHS grass verge past junction with Tullyrusk road - Public Prohibited Area.



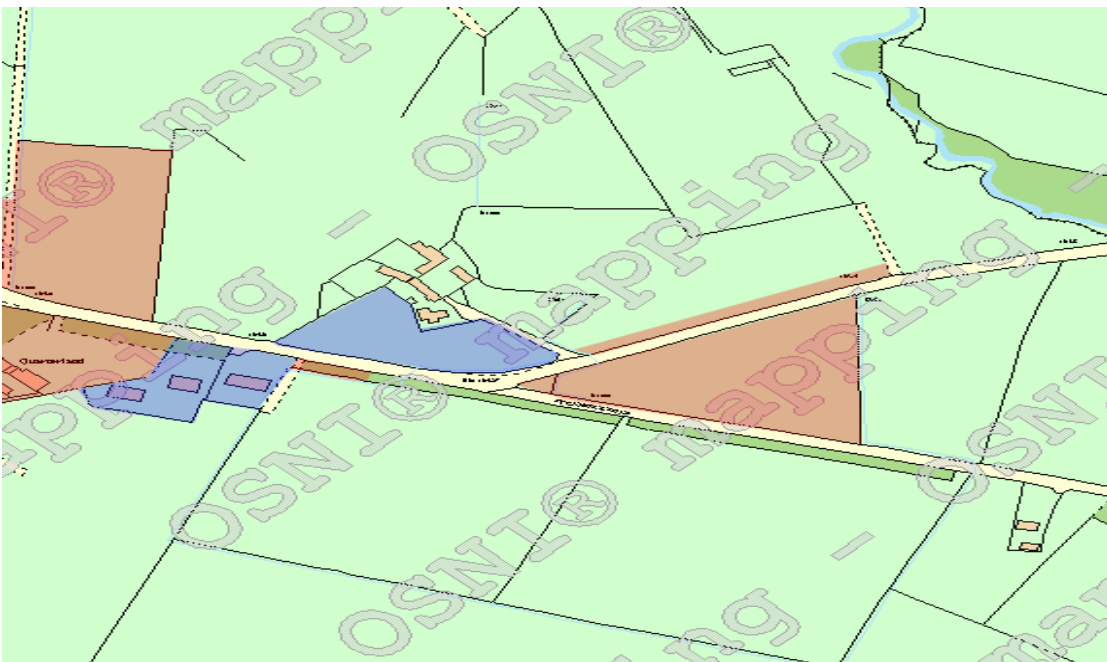
- (1) Grass Verges and edge of track both sides of road to centre of hedge/fence on approach – Public Prohibited Area.
- (2) RHS Wide grass verge after bridge to gate - Public Prohibited Area.
- (3) LHS Complete field to Cochranstown Rd - Public Prohibited Area.
- (4) LHS Field across Cochranstown Rd angled 30M from 1st gate - Public Prohibited Area.
- (5) LHS Field across Cochranstown Rd outside of corner angled 1st gate on Leathemstown road to Stile over fence in corner of field Forming Walkway - Public Prohibited Area.
- (6) RHS Grass verge at junction Leathemstown and Cochranstown roads - Public Prohibited Area.

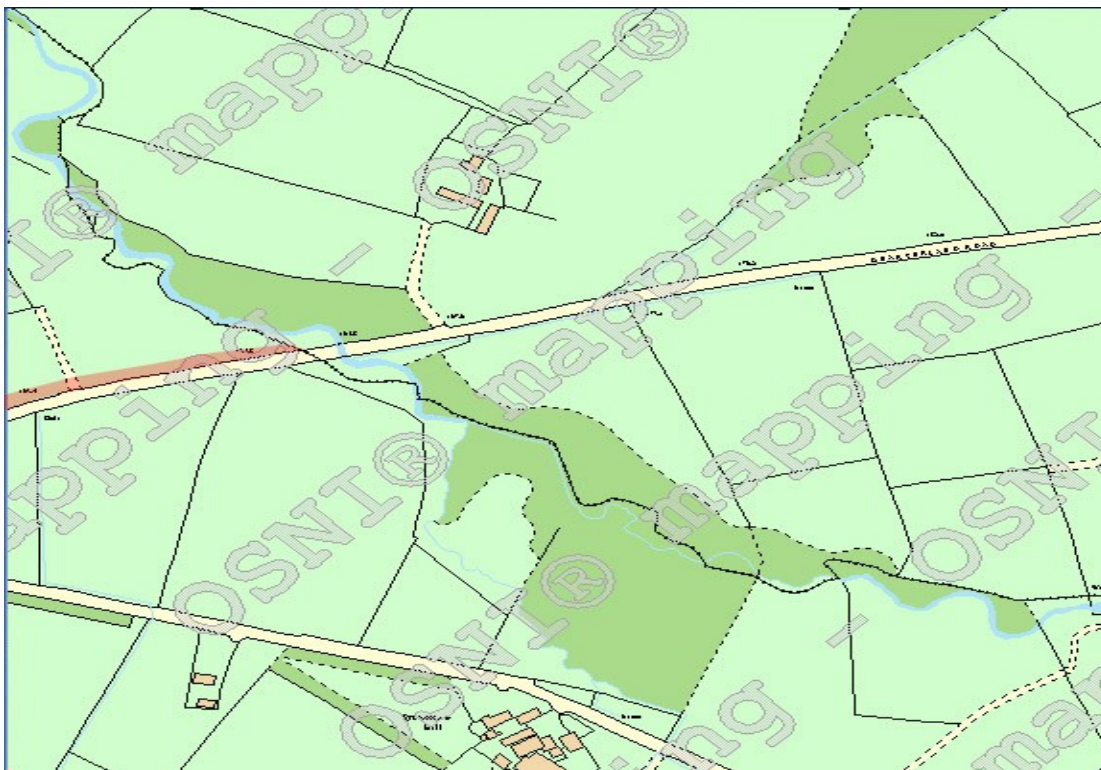


- (1) Grass verges on approach both sides centre of hedge/fence - Public Prohibited Area.
- (2) Large triangular grass area at junction with Quarterlands Rd, from hedge diagonally to concrete fence post with 2 No stays on Quarterlands Rd - Public Prohibited Area.
- (3) LHS/Run Off field ,depth of 40M parallel to Quarterlands Rd – Public Prohibited Area.
- (4) RHS – Inside of corner/junction wooded area Hse No 16 from Entrance to No16 to boundary property of House 13 property of – Public Prohibited Area.
- (5) LHS complete field outside of – Public Prohibited Area.

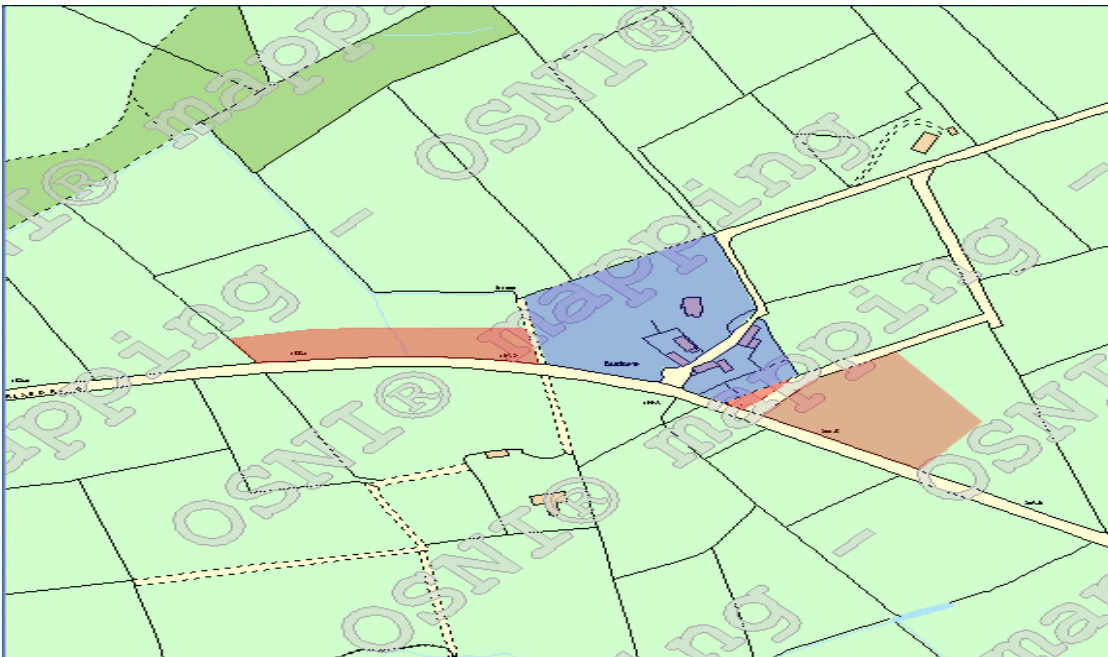


- (1) RHS House No's 11 and 13 Quarterland Road - Private Area
- (2) RHS from laneway at House 13 to Marshalls post – Public Prohibited Area.
- (3) LHS Field on apex of corner - Private Area
- (4) RHS Sycamore Slip Rd to road closed sign – Public Prohibited Area.
- (5) RHS Exit Irelands complete 1st field - Public Prohibited Area.
- (6) LHS Exit Irelands after Entrance wide grass verge – Public Prohibited Area.

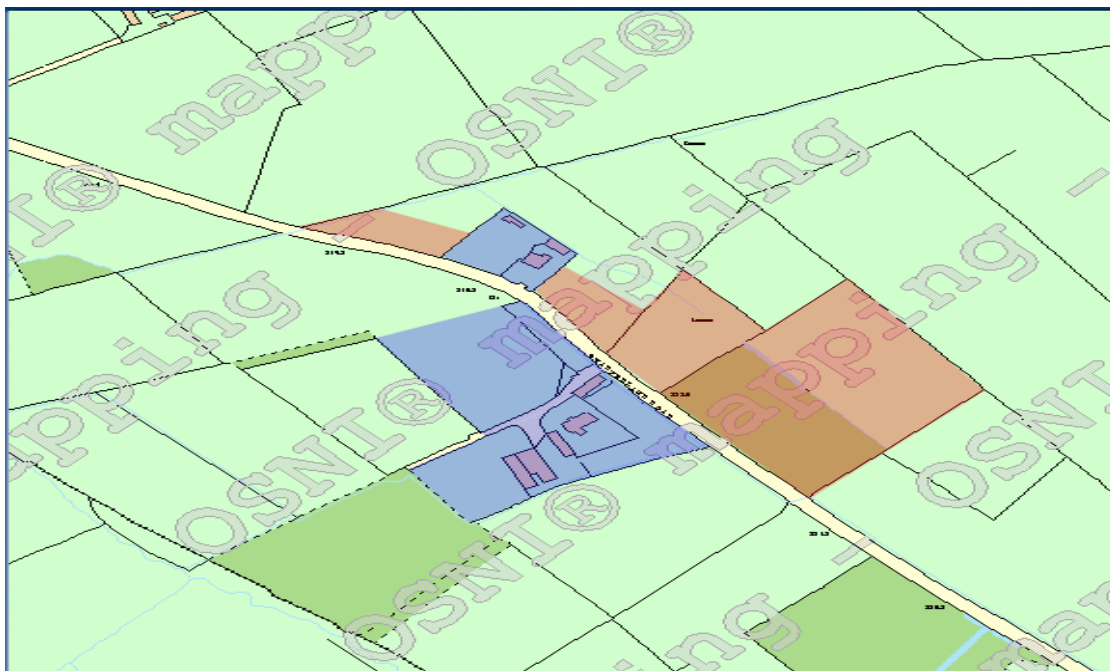




- (1) LHS 2nd field before House No 32 Quarterlands Rd to a depth of 50M parallel to the course – Public Prohibited Area.
- (2) LHS Entrance to No 32 - Private Area
- (3) LHS Entrance to No 34 – Public Prohibited Area.
- (4) LHS Field/Run off, 70M up driveway of No 34 diagonally across filed to 40M at right angles from Flag post at 2nd pole just past gate – Public Prohibited Area.



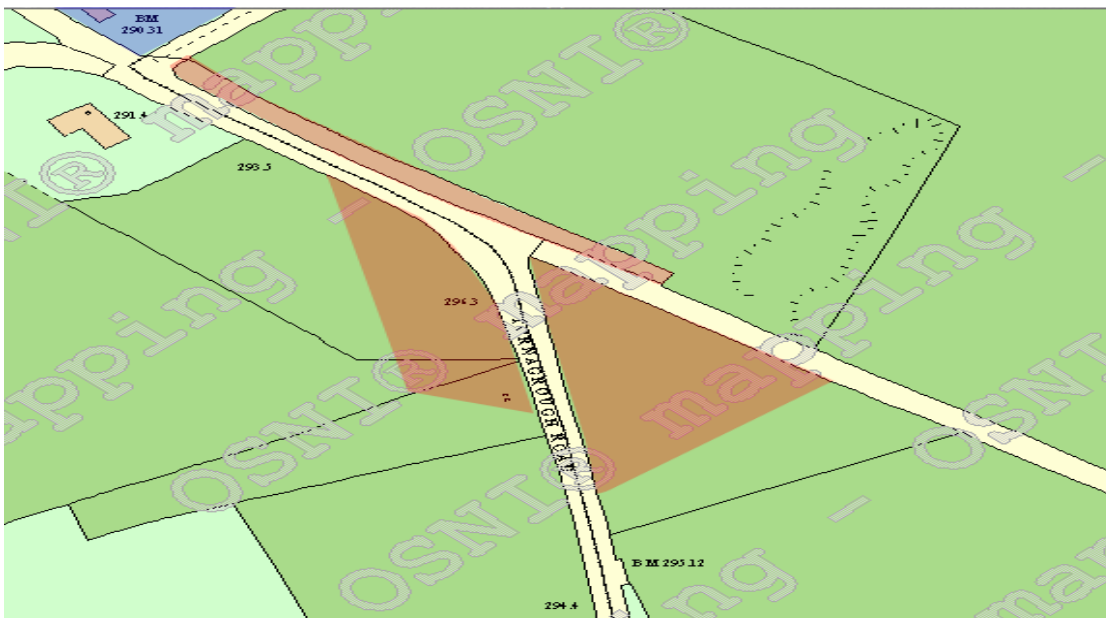
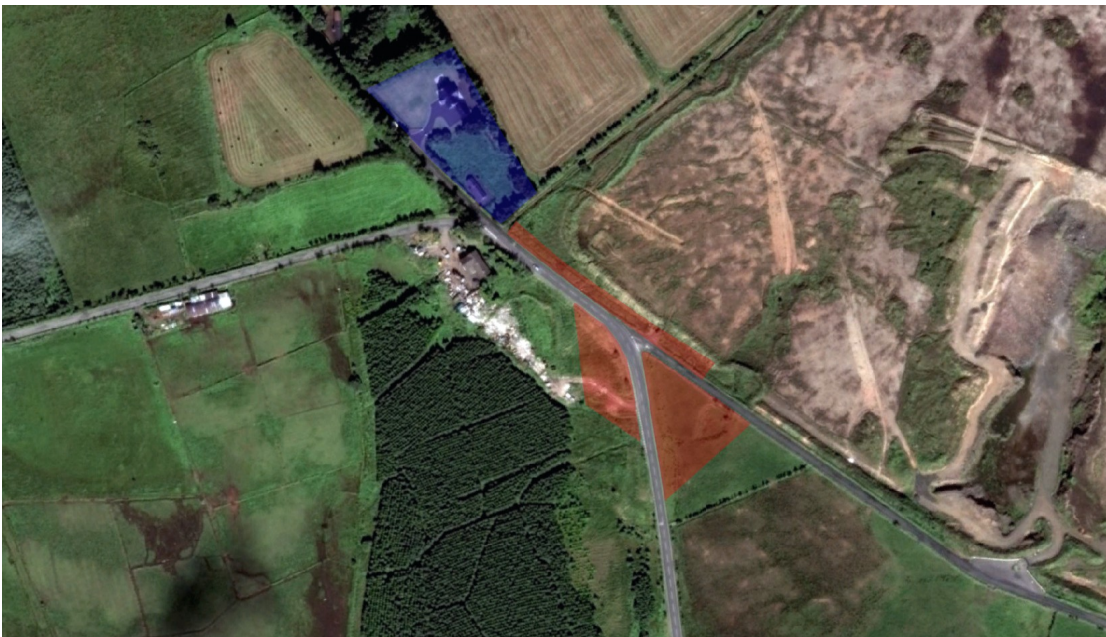
- (1) LHS Field before No 42 Quarterlands Rd to a depth of 20M – Public Prohibited Area.
- (2) LHS Garden to No 42 - Private Area
- (3) LHS Exit 2 No fields complete where gate and posts are removed – Public Prohibited Area.



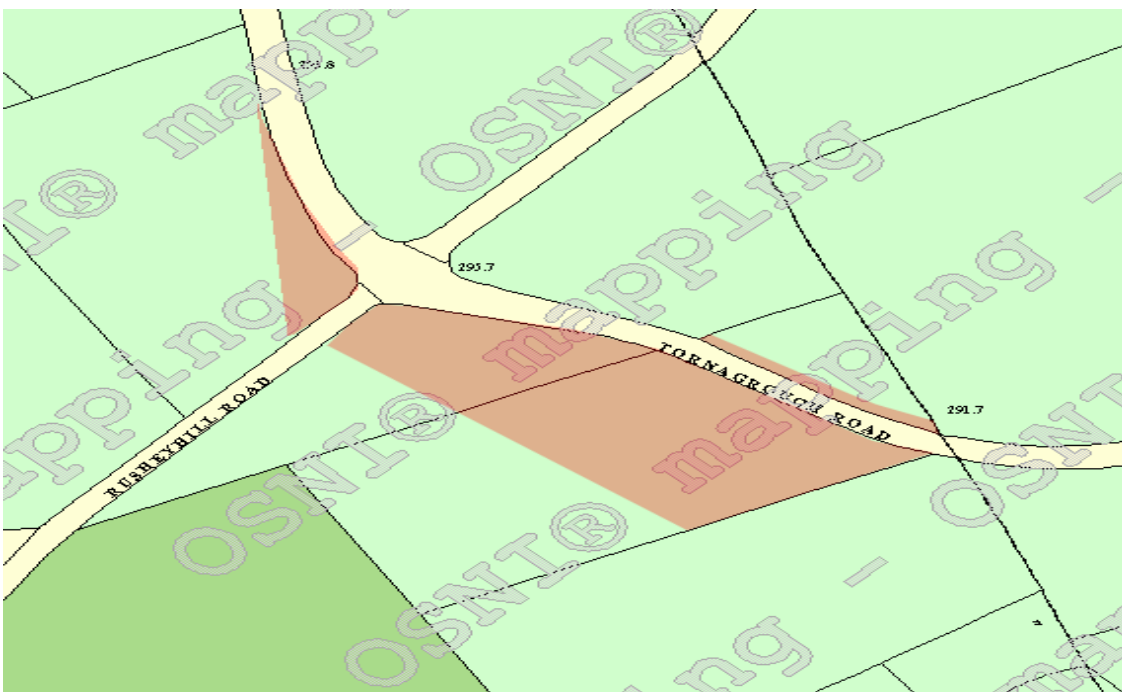
- (1) Wide grass verge both sides approach to Jordan's Cross – Public Prohibited Area.
- (2) Both sides wide grass verge after Jordan's Cross – Public Prohibited Area.



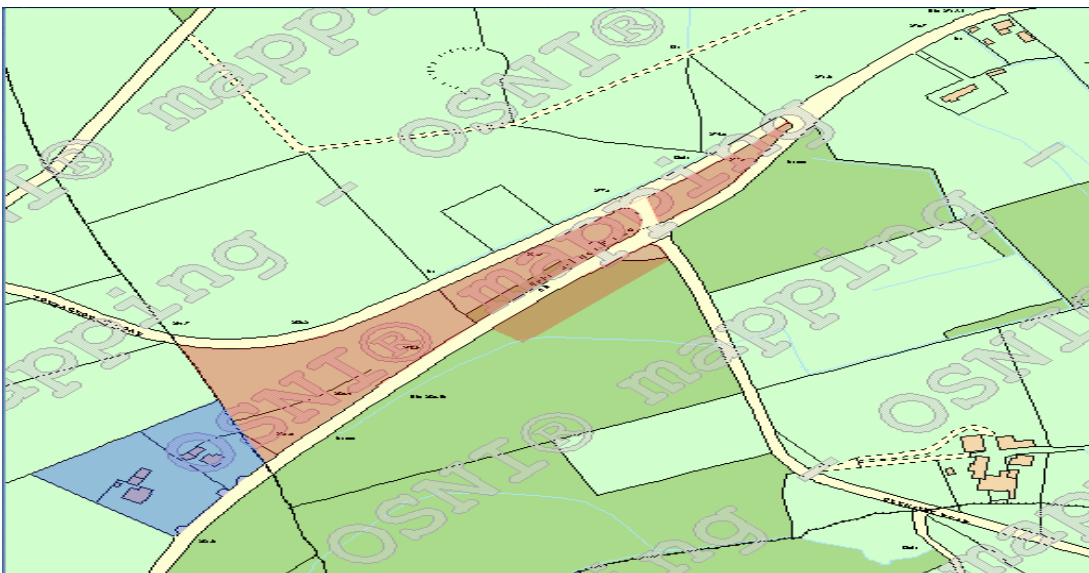
- (1) LHS Wide grass verge from field after House No 48 (Road sign) to and including slip road - Public Prohibited Area.
- (2) RHS Inside of corner from hedge at "Hole in the wall" follow line of telegraph pole then right angles to 2nd Gate on course - Public Prohibited Area.
- (3) LHS Field on exit removable fencing, 90 M on slip road at gate diagonally across field to gate in opposite hedge - Public Prohibited Area.



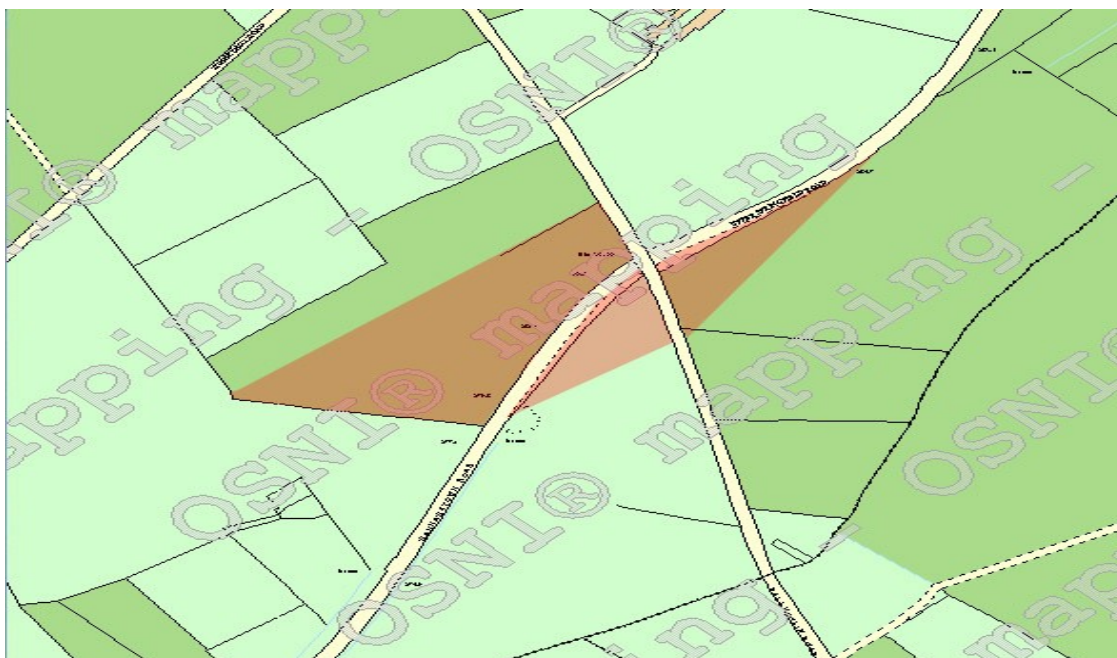
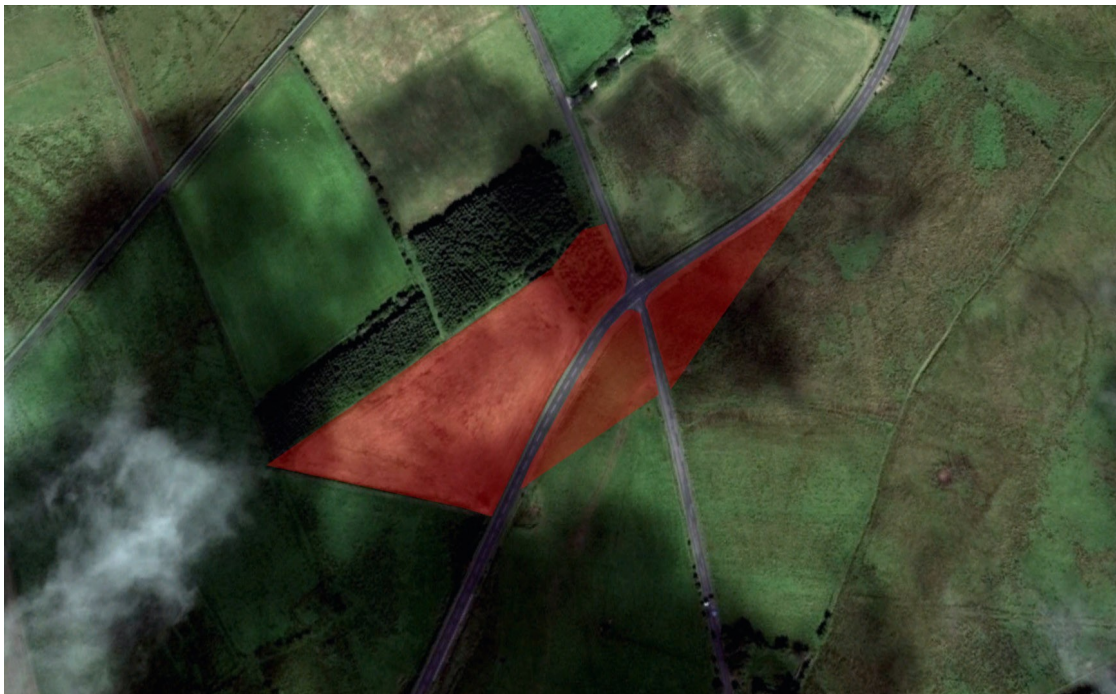
- (1) RHS Diagonally across field at junction Tornagrough/Rushyhill Rd 30M up Rushyhill Rd and 50M along Tornagrough Rd - Public Prohibited Area.
- (2) RHS Field after Rushyhill Rd from gate to removable fencing end and continuing through next field - Public Prohibited Area.
- (3) LHS After Rushyhill Rd Inside of corner 10M - Public Prohibited Area.



- (1) Complete area enclosed by circuit approaching and leaving hairpin - **Public Prohibited Area.**
- (2) Run on/Slip road, point enclosure to road closed ropes - **Public Prohibited Area.**
- (3) LHS Outside of exit hairpin 25M depth (gate on Glenside road) to beginning of hedge - **Public Prohibited Area.**
- (4) RHS inside of left hand bend before hairpin 10M - **Public Prohibited Area.**
- (5) RHS – Front of 1st and 2nd Bungalows – **Private Areas**

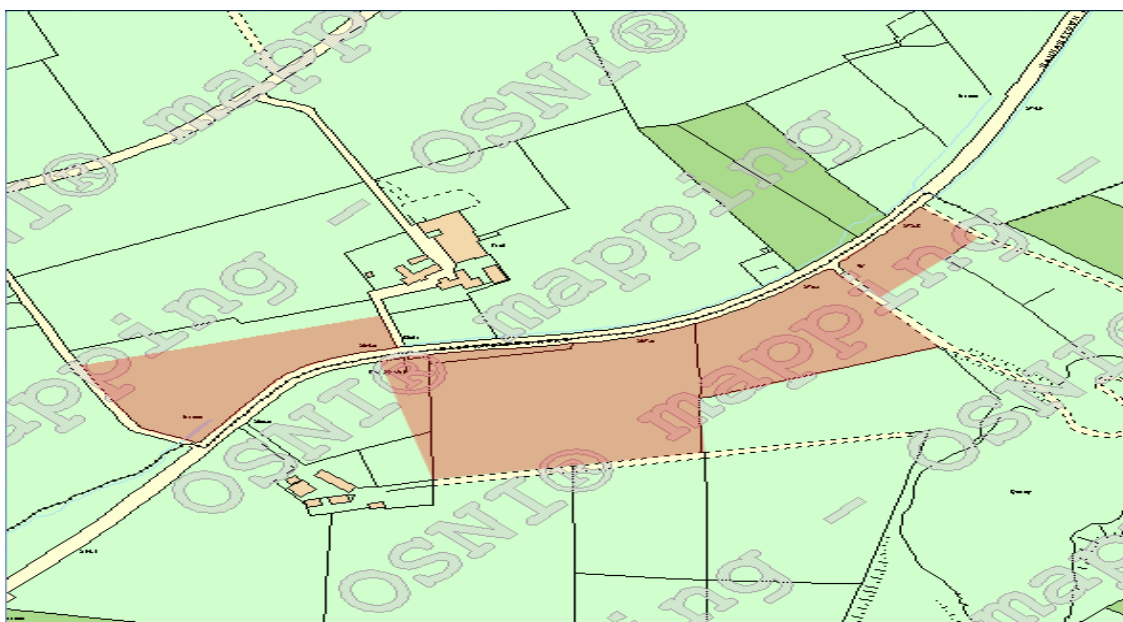


- (1) LHS Slide off field (Smith's) on outside joining approx 170M on Hannahstown Rd diagonally across to gate 50M on Ballcollin Rd - **Public Prohibited Area.**
- (2) RHS Field with removable fencing to a 50M depth parallel to the course - **Public Prohibited Area.**
- (3) LHS Field 50M on Ballycollin (Gate) diagonally across to 3rd telegraph pole on course approx 120M from road junction. - **Public Prohibited Area.**



Quarries	Rev 2	Date April 2013	Sheet No. 19
----------	-------	-----------------	--------------

- (1) LHS Field behind protected gates - Public Prohibited Area.
- (2) LHS Complete field after quarry entrance (Smiths) - Public Prohibited Area.
- (3) LHS Complete 2nd field after quarry entrance (Smiths) - Public Prohibited Area.
- (4) LHS Part 3rd field, 15M at course side ie removable fence and gate diagonally across field to corner - Public Prohibited Area.
- (5) RHS Field from 20M up Smith laneway diagonally across field to 75M up Lindsay Driveway - Public Prohibited Area.



- (1) LHS Complete field after grandstand at removable fencing - **Public Prohibited Area.**
- (2) LHS House No 3 Hannahstown Rd garden - **Public Prohibited Area.**
- (3) LHS Complete 2nd field at removable fencing adjacent to grandstand paddock - **Public Prohibited Area.**
- (4) RHS Wide grass verge in front of fence at camping area - **Public Prohibited Area.**

